

Government Engineering College, Kozhikode - 673005	
NOTICE INVITING E-TENDER	
No.P1/2288/23/GECK	09-05-2024
Tender No.	P1/06/2023-24
Subscription	Supply of Steel Loading Frame 175 tonne, Civil Engg Dept of this institution
Last date and time of receipt of tender	04/06/2024 3 PM On the website(www.etenders.kerala.gov.in)
Date and time of opening of tender	05/06/2024 3 PM
Bid Validity	120 days
Bidding Fee	₹.2800/- + GST 504/-
E.M.D required	₹.18,340/-

Conditions:

Price : Should include all charges and taxes which specifically stated.

Payment : Will be made only after the successful supply, installation of the items as per supply order

Delivery F.O.R : Govt Engineering College, Kozhikode.

Agreement : Preliminary Agreement in **Kerala Stamp Paper worth ₹.220/- (Preliminary Agreement shall be uploaded without fail otherwise bid will not be considered)**

Delivery Condition : Within 4 months from the supply order

Garantee/Warrantee : (1 year) Specified in the specification of items list

Date of opening : In case the proposed date declared as holiday, the tender will be opened on the next working day in the same time.

Special conditions

- The bidder must furnish name of institutions (under this department and others) in Kerala where the same items were supplied.
- Proforma Report /Original Pamphlet / Warranty Certificate / Preliminary Agreement in **Kerala Stamp Paper worth ₹.220/-** are required.
- The demonstration of the item/equipment will have to be arranged by the bidder before the evaluation committee during technical evaluation and if any of the items/equipment is not found suitable and/or up-to-the mark by the Committee, the same shall be liable to be rejected.
- The firm must have proven knowledge and expertise in standard system installation, commissioning and providing training.
- The price must be quoted in INR ₹
- After E-tendering the hard copies of all the tender documents except BOQ/Schedule should be submitted to the Principal, Government Engineering College, Kozhikode and cover should be superscribed with the tender id. closing date and opening date of the tender.
- The supplying firm should have atleast **5 years** of experience in this field. The firm should also have past experience in installing the steel loading frame in various Government Engineering Institutions in Kerala and outside Kerala. The proof documents showing the above should be furnished along with the bid submitted.
- The supplier should furnish the proof document showing that the company is offering an **ANNUAL MAINTENANCE CONTRACT AGREEMENT.**

The tender procedure will be made as per Rules mentioned in the Revised Store Purchase Manual. The bidders should participate this tender through E-tendering System. Tender cost and EMD should be submitted only through online. For more details contact phone number 0495 2383220

STEEL LOADING FRAME -175 TONNE

Sl. No.	Description	Unit weight (kg/m ³)	Total quantity (kg)
1	<p>FABRICATION,TRANSPORTATION LOADING ,UNLOADING AND INSTALLATION OF STEEL LOADING FRAME -175 TONNE</p> <p>Structural steel work riveted, bolted or welded in built up sections, framed work, including cutting, hoisting, fixing in position and applying a priming coat of approved steel primer all complete, & painting with synthetic enamel paint of approved brand and manufacture to give an even shade.</p> <p>Minimum Grade of steel- Fe 340 Mpa. (For Dimensions of the components refer the drawings 1 to 5</p> <p>Movable Horizontal Beam 25mm steel plate-4 nos, 12mm plate-5 nos (L=0.47 m, Thickness= 0.012 m & Height= 0.6 m)</p> <p>Bottom fixed beam 25mm plate-4 nos, 12mm plate-3 nos (L=0.40 m, Thickness= 0.012 m & Height= 0.40 m)</p> <p>Base plate 25mm plate-2 nos, 12mm plate-12 nos (L=0.38 m, Thickness= 0.012 m & Height= 0.20 m)</p> <p>Columns 25mm plate-10 nos.</p> <p>Fixing arrangement for horizontal jack ISA 100X100X10-4 nos 8mm plate-36 nos (L=0.1 m, Thickness= 0.008 m & Height= 0.10 m)</p> <p>Top Beam ISMC 250-2nos</p> <p>Fixing plate for jacks 20mm plate-2 nos (L=0.6 m, Thickness= 0.020 m & Height= 0.60 m)</p>		



Steel rods		
60mm Dia-4 nos (L=0.8 m)		
unit weight of steel plates & steel rod	7850	
ISA 100X100X10 in m	14.9	
ISMC 250 in m	30.4	
Add wastage, connections & Other -10%		
Total weight of Structural steel as per estimate (kg)		15000
2 3 T Pulley & chain (2 nos.)		
3 Other Unforeseen		
4 GST -18%		
TERMS AND CONDITIONS		
1. The supplying firm should have atleast 5 years of experience in this field. The firm should also have past experience in installing the steel loading frame in various Government Engineering Institutions in Kerala and outside Kerala. The proof documents showing the above should be furnished along with the bid submitted		
2. Installation and Commissioning- Free of cost at Structural Engineering Lab of Civil Engineering Department, GEC Kozhikode		
3. The supplier should furnish the proof document showing that the company is offering an ANNUAL MAINTENANCE CONTRACT AGREEMENT.		
4. Minimum warranty period-1 year		

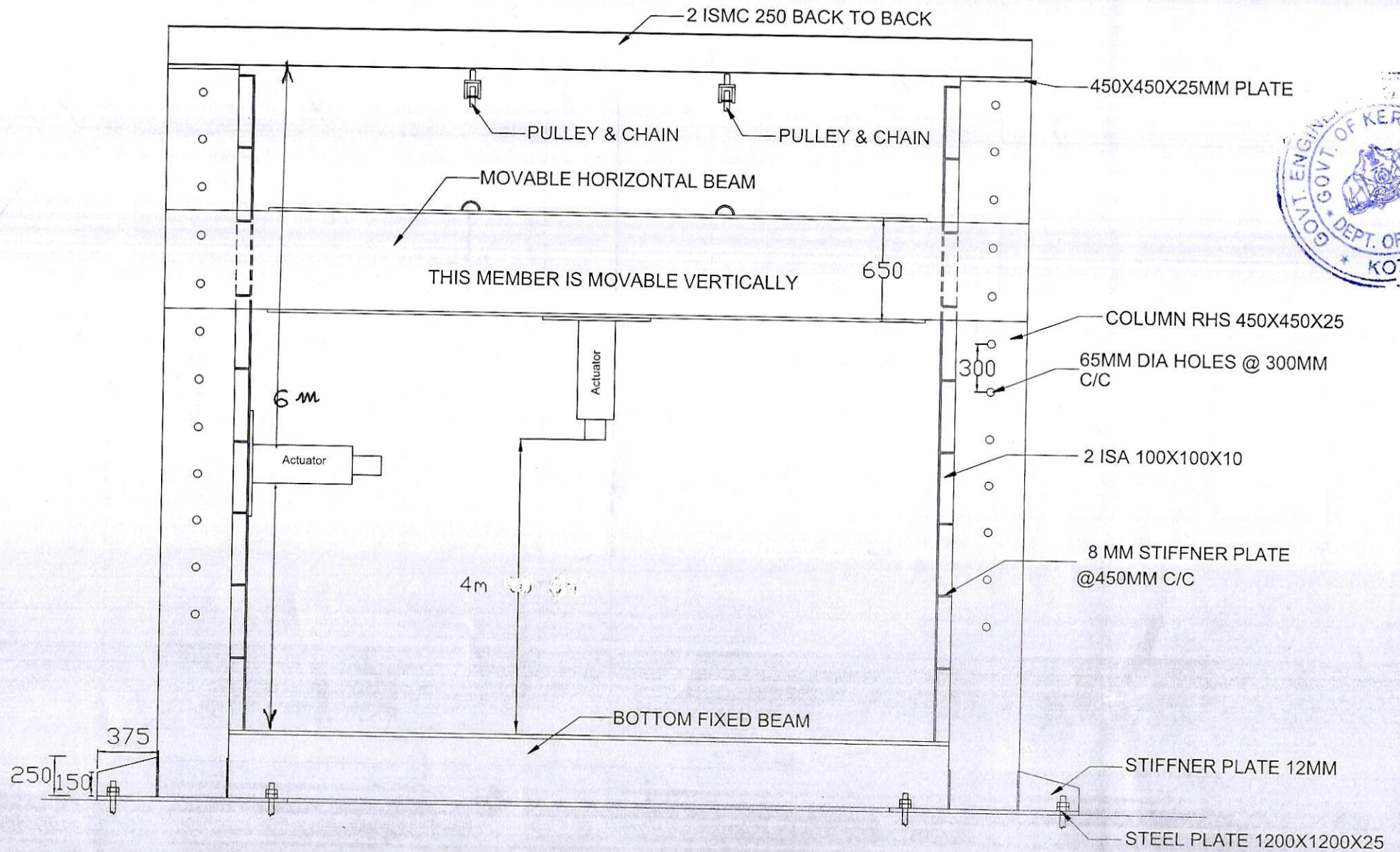
For spec enquiry: hodcivil@geckkd.ac.in

f

Anjane

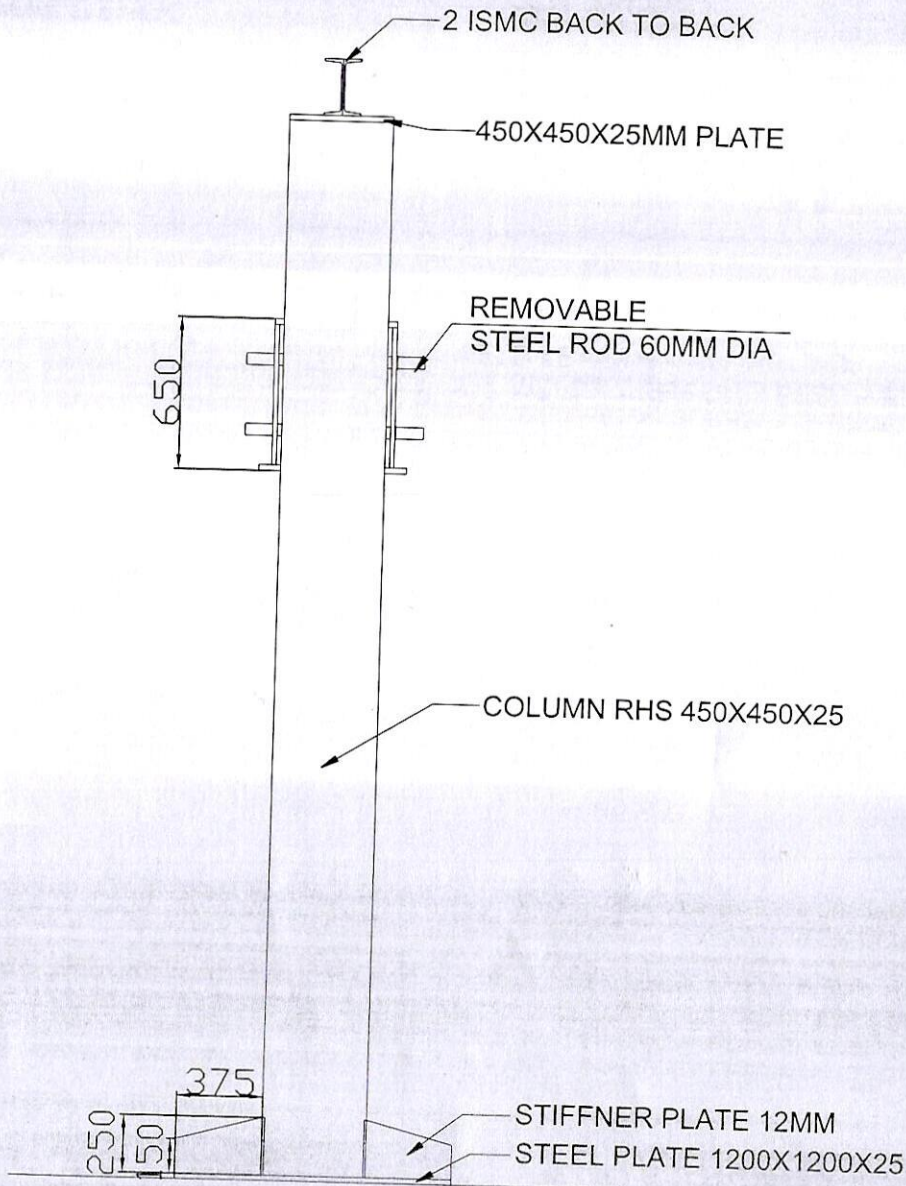
Anjane
PRINCIPAL
GOVT. ENGINEERING COLLEGE
WEST HILL, KOZHICODE
KERALA - 673 005

Dr. Anjana Sankhalingam
Prof. in CE
GEC Kozhikode



FRONT ELEVATION



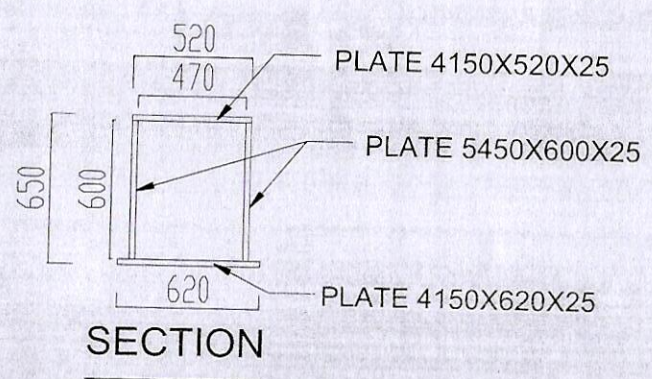
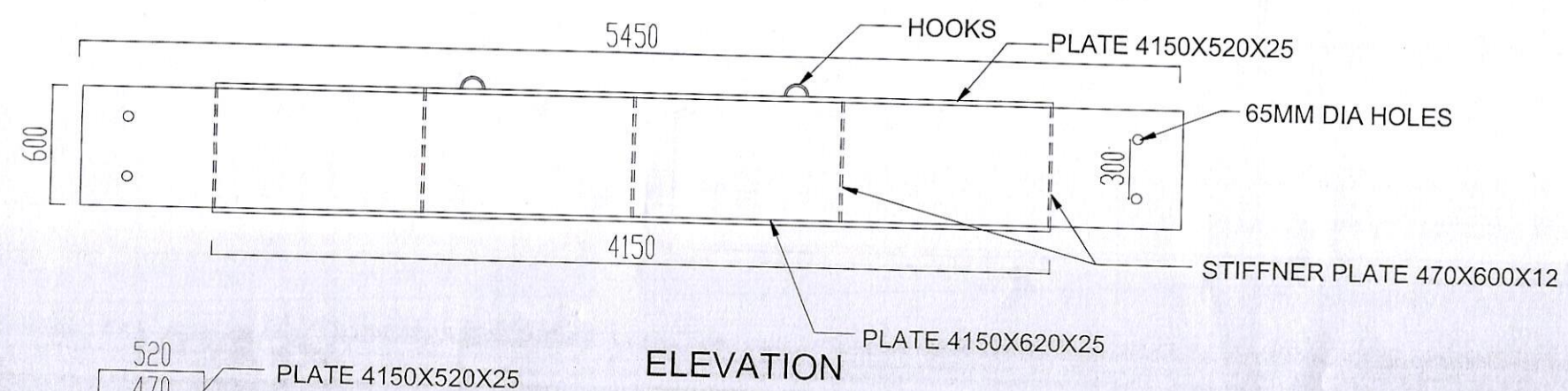
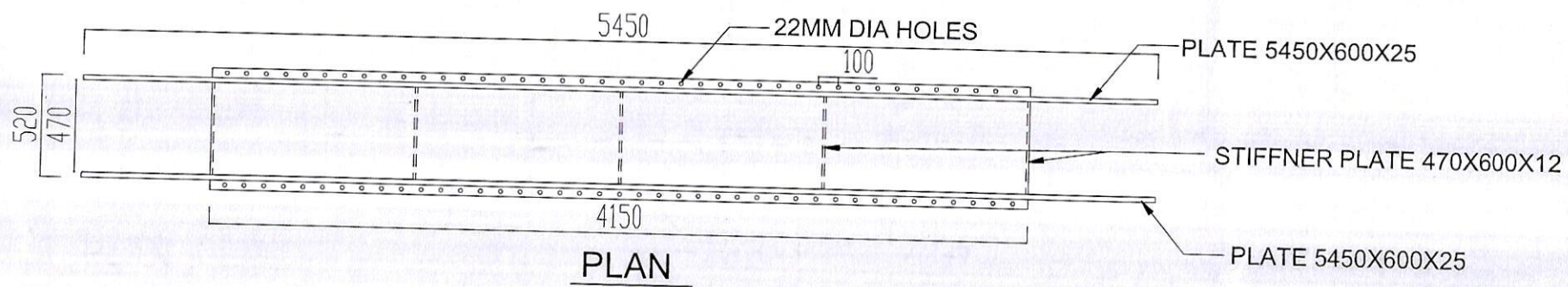


NOTES:-

1. WELD LENGTH - ALL ROUND.
2. ALL WELDS ARE FULL LENGTH FILLET WELDS.
3. MINIMUM TENSILE STRENGTH SHALL BE 250 N/mm².
4. ALL DIMENSIONS ARE IN mm UNLESS OTHERWISE SPECIFIED.
5. THIS IS NOT A SHOP / FABRICATION DRAWING.

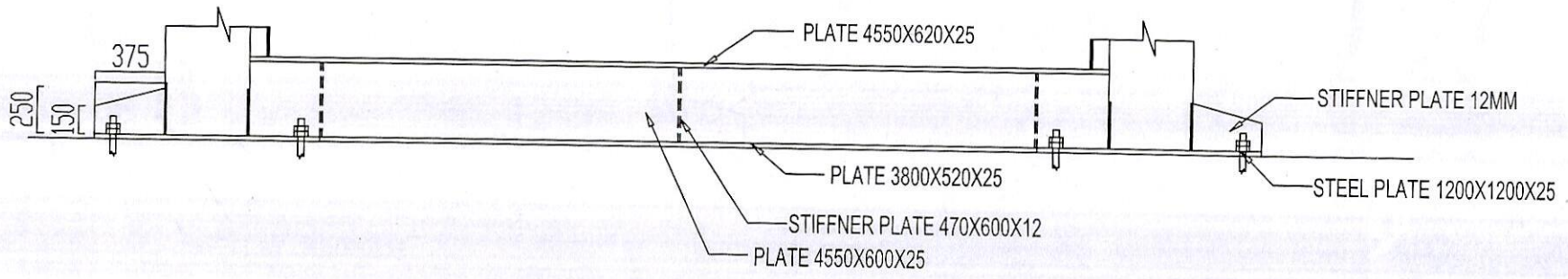


SIDE ELEVATION

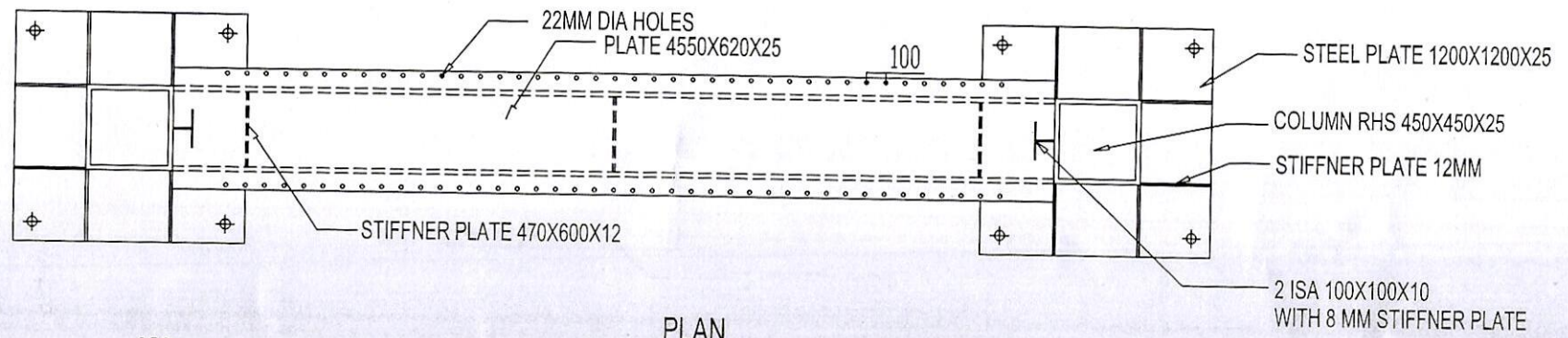


MOVABLE HORIZONTAL BEAM DETAILS

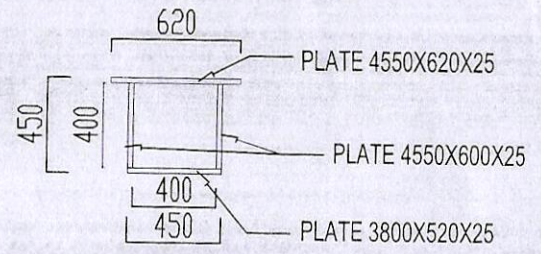




ELEVATION



PLAN



SECTION

BOTTOM FIXED BEAM DETAILS



Principal
 GOVT. ENGINEERING COLLEGE
 WEST HILL, KOZHIKODE
 KERALA - 673 005

Dr. Anjana Sankaranarayanan
 Prof. in CE
 AEC Kozhikode